



# Storyboard

One Ellesmere Port

Community Partnership

January 2025

# Ellesmere Port

- Historically the port was designed by Thomas Telford and was the largest Inland Waterway dock complex in the UK.
- The Vauxhall Motors car factory and Stanlow Oil Refinery have brought industrial jobs to the area.
- Blue Planet Aquarium homes one of the largest collections of sharks in Europe.



# Population

- One Ellesmere Port PCN has a registered population of approx. 72,000 patients and is one of nine Care Communities in Cheshire West.





# Small Area Population Estimates mid-2022

## Community Partnerships



Wards

Localities

Community Partnerships

Parishes

Community Partnership

Ellesmere Port

Age group	Population	Percentage
Aged 65+	11,985	18.3%
Aged 16-64	41,178	62.8%
Aged 0-15	12,376	18.9%
<b>Total</b>	<b>65,539</b>	<b>100.0%</b>

65,539

Total population (mid-2022)

8.3% (5,345)

Ethnic minority (2021 Census)

28,232

Households (2021 Census)

Enter an age group (0 to 90+)

0

90

65,539

Population in age group

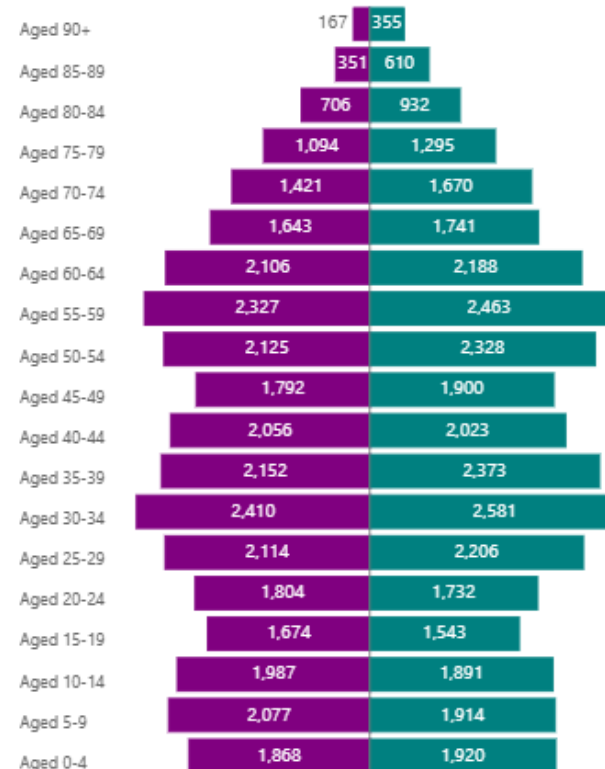
29,190

Dwellings (2021 Census)

Age group	Male	Female	Total
Aged 0-4	1,868	1,920	3,788
Aged 5-9	2,077	1,914	3,991
Aged 10-14	1,987	1,891	3,878
Aged 15-19	1,674	1,543	3,217
Aged 20-24	1,804	1,732	3,536
Aged 25-29	2,114	2,206	4,320
Aged 30-34	2,410	2,581	4,991
Aged 35-39	2,152	2,373	4,525
Aged 40-44	2,056	2,023	4,079
Aged 45-49	1,792	1,900	3,692
Aged 50-54	2,125	2,328	4,453
Aged 55-59	2,327	2,463	4,790
Aged 60-64	2,106	2,188	4,294
Aged 65-69	1,643	1,741	3,384
Aged 70-74	1,421	1,670	3,091
Aged 75-79	1,094	1,295	2,389
Aged 80-84	706	932	1,638
Aged 85-89	351	610	961
Aged 90+	167	355	522
<b>Total</b>	<b>31,874</b>	<b>33,665</b>	<b>65,539</b>

Population by age group and gender

Male Female



Source: Mid-year population estimates (revised mid-2022 estimates) and 2021 Census (both built up from ward estimates), Office for National Statistics (ONS). Contains public sector information licensed under the Open Government Licence v3.1.

Note: ONS advises caution if using numbers of single years of age, as these would not be expected to have the same level of accuracy as the aggregated estimates. ONS generally recommends rounding population estimates to the nearest 100.

Definitions (2021 Census): Dwelling = Accommodation occupied by or available for occupation by a household.

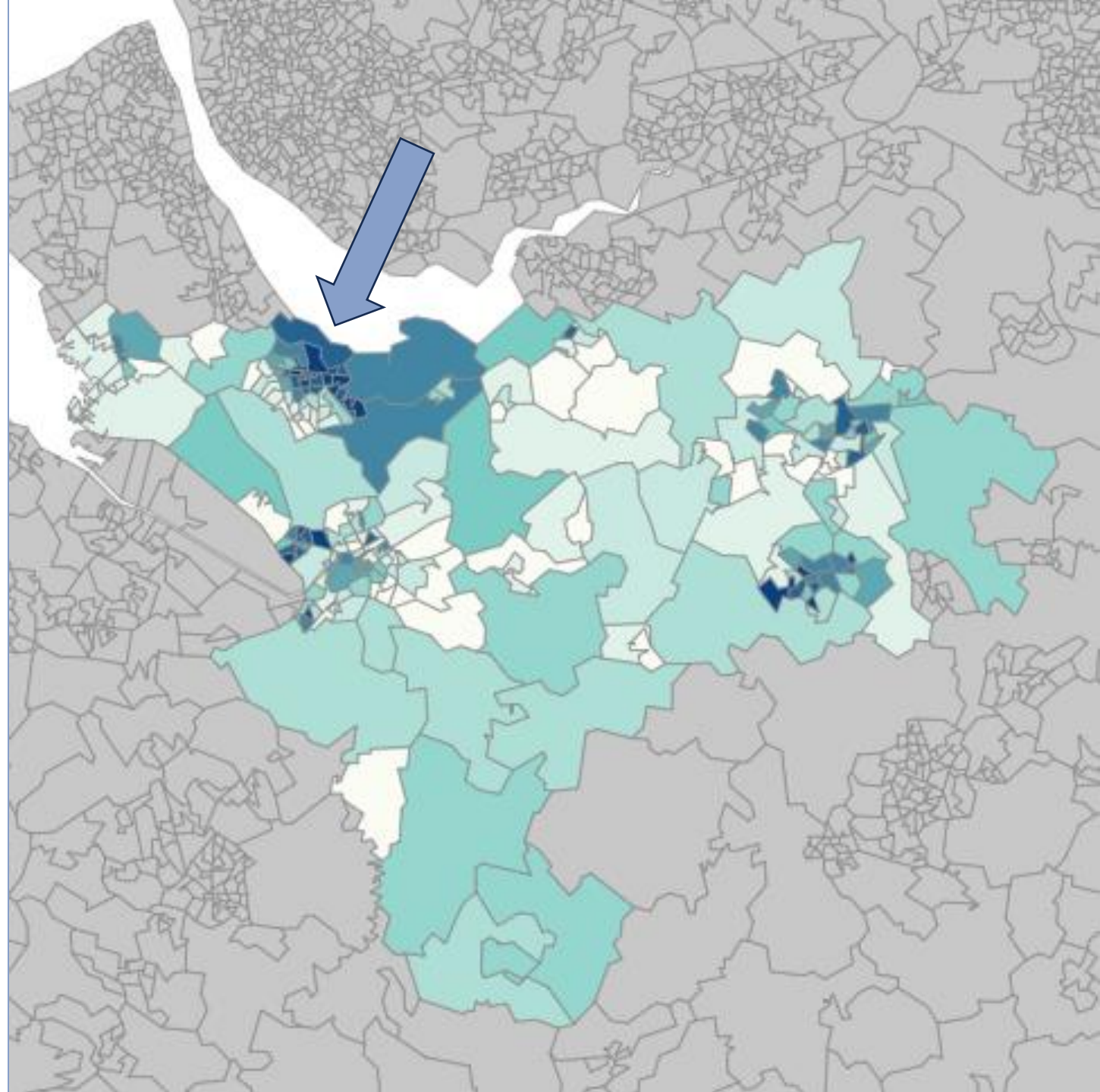
Household = One person living alone / group of people living at the same address (who share cooking facilities and a living room/ dining area).

Ethnic minority (in this report) = All ethnic groups other than White British.

# Deprivation

- From the 2019 Ministry of Housing, Communities & Local Government report, the majority areas of Ellesmere Port town center sit in the 20% IMD decile

[Microsoft Power BI](#) – IoD2019

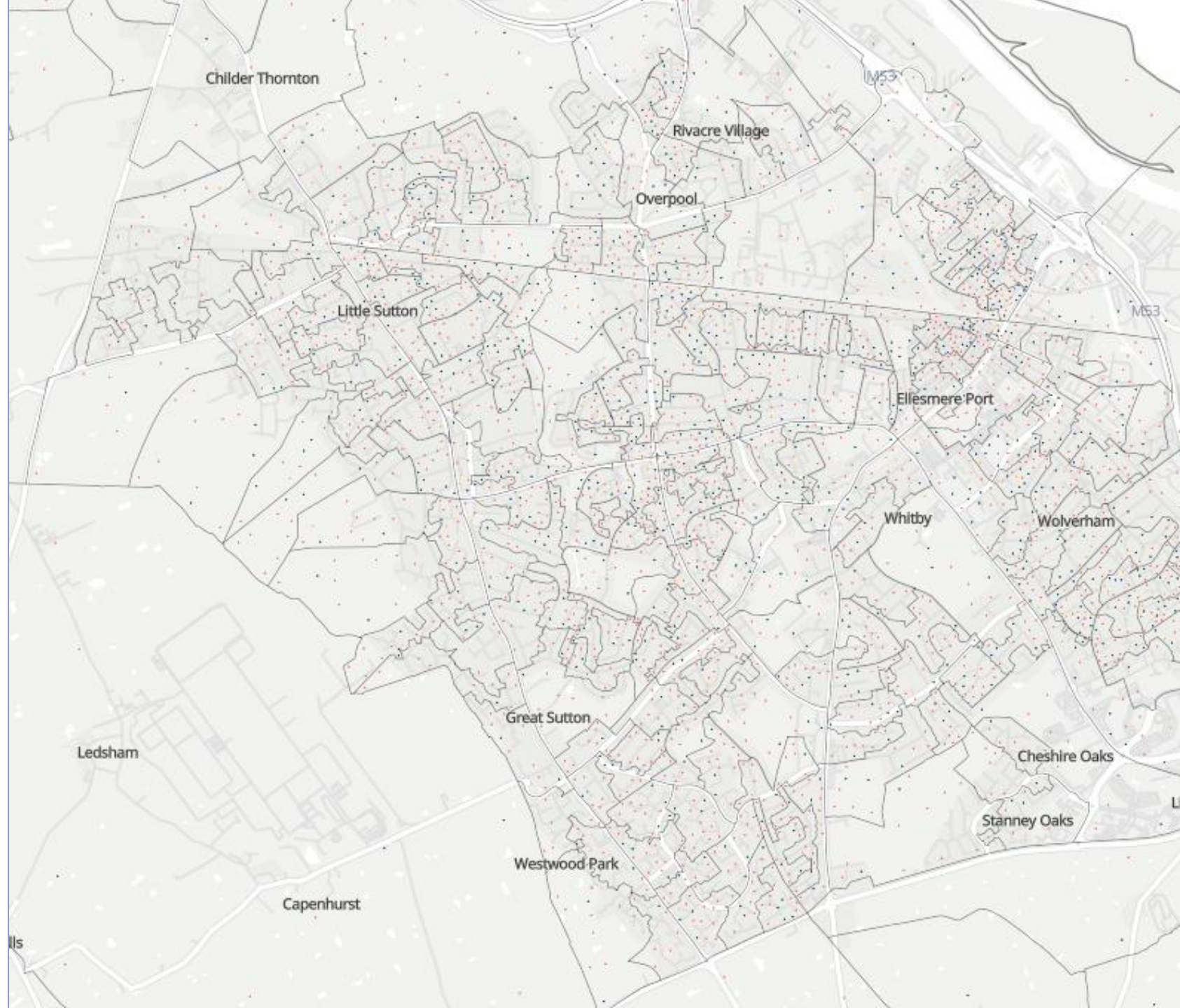




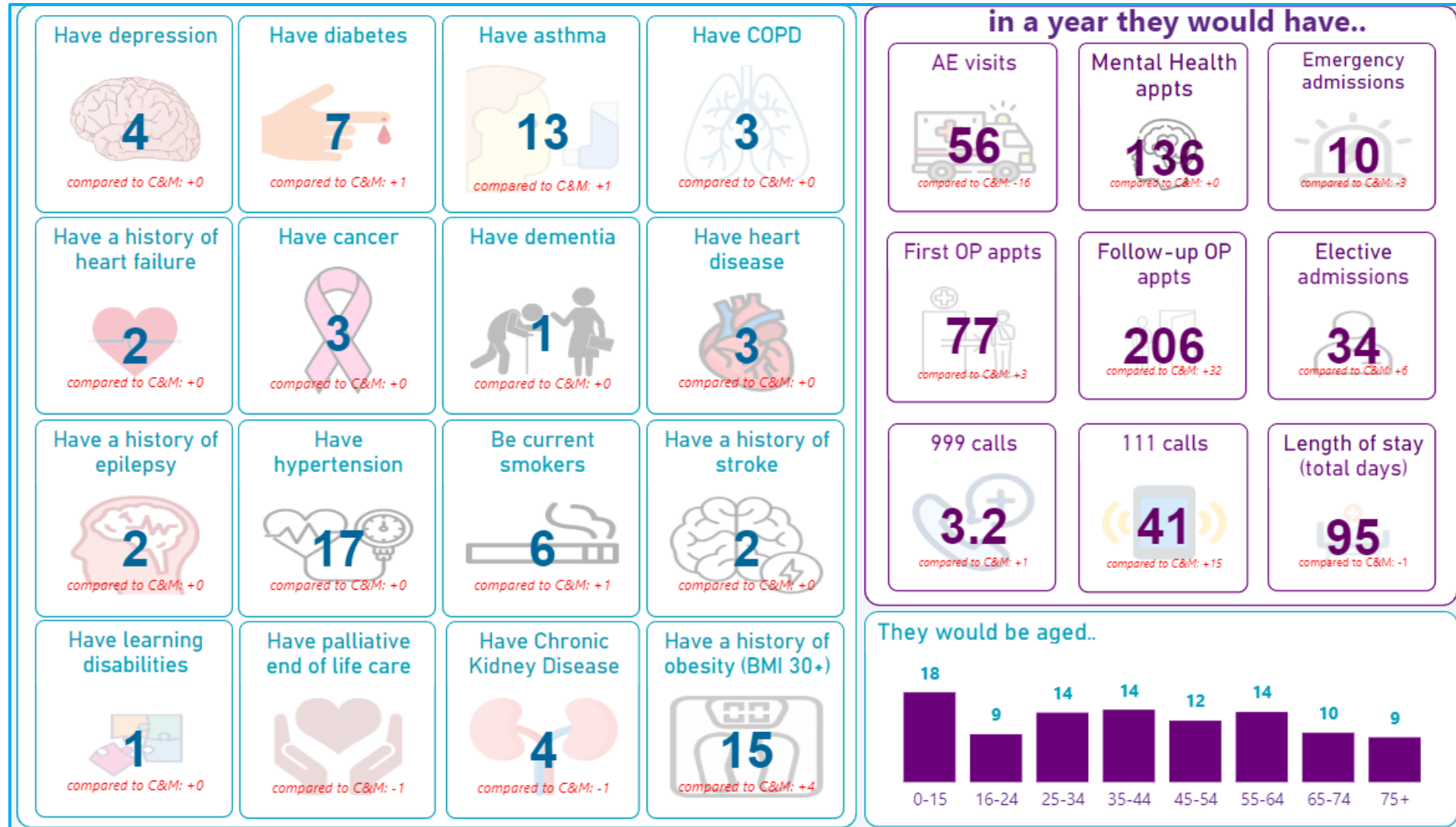
# Deprivation

- In this map from 2021, each dot represents 5 households in Ellesmere Port deprived in at least one dimension (Education, Employment, Health, Housing).

[Household deprivation](#)  
[- Census Maps, ONS](#)



# One Ellesmere Port as a village of 100





# 6 GP Practices

- There are 6 GP Practices in One Ellesmere Port PCN.



**Whitby Health Partnership**



**Great Sutton Medical Centre**



**Old Hall Surgery**



**Hope Farm Medical Centre**

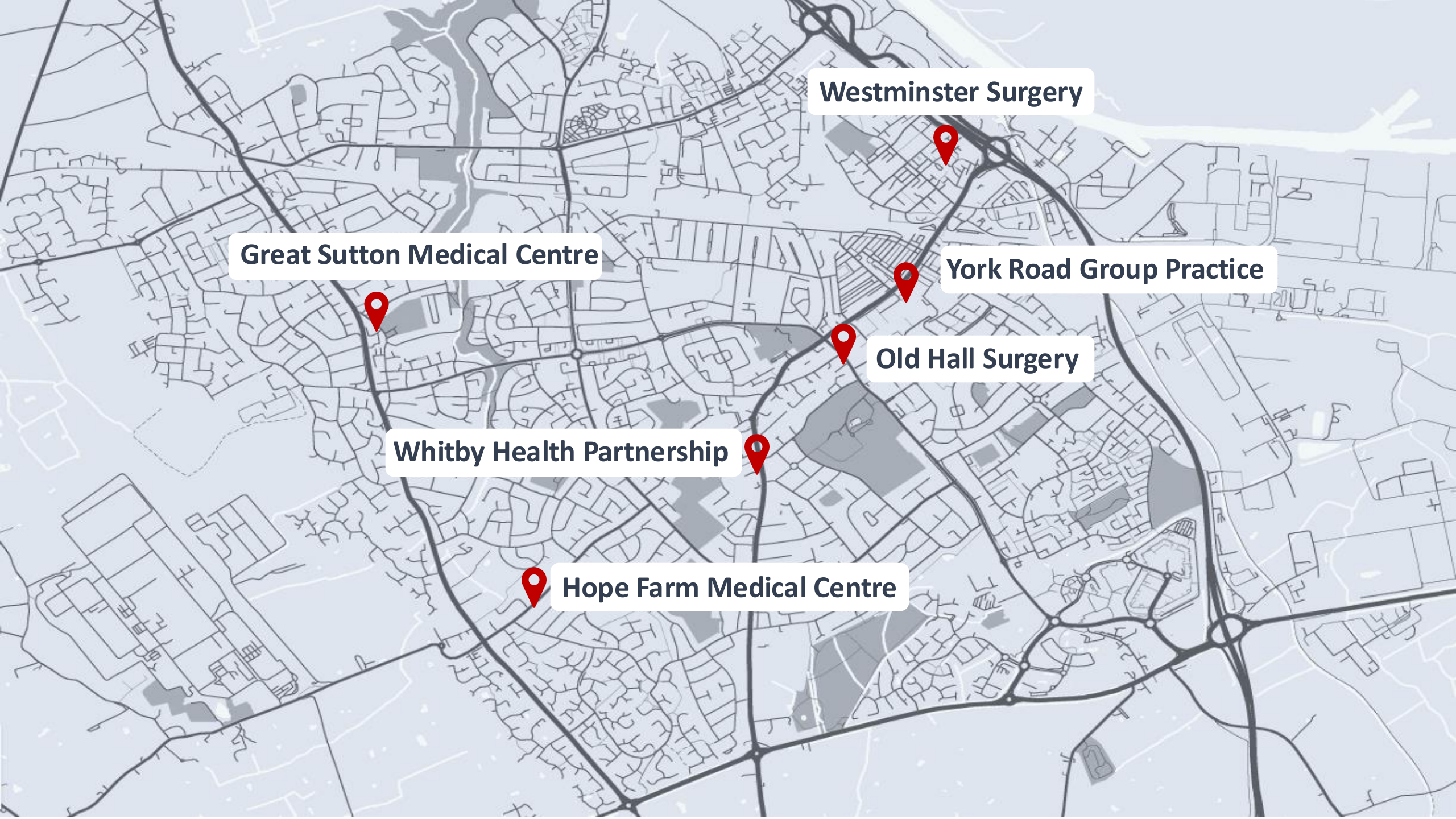


**York Road Group Practice**



**Westminster Surgery**





**Westminster Surgery**

**Great Sutton Medical Centre**

**York Road Group Practice**

**Old Hall Surgery**

**Whitby Health Partnership**

**Hope Farm Medical Centre**

# Community Partnership Steering Group

- One Ellesmere Port Community Partnership Steering Group meet bi-monthly.
- The group consists of individuals, community groups and health and care professionals that support the people of Ellesmere Port to stay healthy and well closer to home.
- Prevention and early intervention is at the core of what we do, designing tailor made services to help improve the health and wellbeing of the residents of Ellesmere Port.



# Community Partnership Steering Group Leads



**Emily Lightfoot**  
PCN Lead Social  
Prescriber & Chair



**Simon Sandford**  
Healthbox CIC Director  
& Strategy and  
Engagement Lead

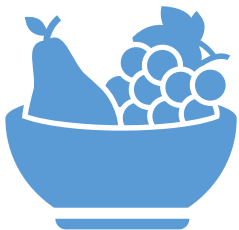
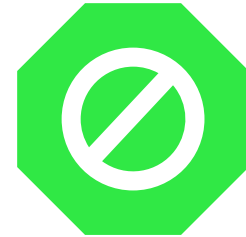


# One Ellesmere Port Community Partnership Priorities



Reduce falls and social isolation in elderly.

Reduce harm from drug and alcohol addiction.



Encourage healthy eating and exercise in families and improve family wellbeing.

# Current Projects

- Community Connect
- Active Travel
- Health & Wellbeing Event
- Collaboration with Brio and the Port Arcades for the Vaccination programs
- Ellesmere Port Fun Day
- Momenta Type 2 Diabetes Path to Remission Group Consultations
- Mapping activities for older adults for falls prevention



# Community Connect

- Emily Lightfoot chairs the meetings.
- Networking event for all the VCFSE organisations delivering for the residents of Ellesmere Port.
- Fantastic opportunity to build relationships and knowledge of local services.
- Give local groups the opportunity to show case their services and share experience.
- Builds relationships and cross working productive opportunities.







Cheshire College  
South & West



v-i-a



Talking Therapies

# Community Connect



# Our Partners

Cheshire West & Chester Council

Libraries



Live Well  
Cheshire West



Cheshire and Wirral Partnership **NHS**  
NHS Foundation Trust



# Let's Talk

## Location

Trinity Church, Whitby Road, Ellesmere Port, Cheshire, CH65 0AT.

## Opening times

Every Thursday - 10am to 12noon

## Available support:

- Access to community activities
- Advice on managing activities relating to daily living
- Advice about equipment, aids and adaptations
- Cost of living advice and support
- Advice on how to access support and activities to reduce social isolation and loneliness
- Carer support
- Consumer advice
- Housing advice from ForHousing





# Social Media



[www.oneellesmereport.co.uk](http://www.oneellesmereport.co.uk)



@oneellesmereportpcn



One Ellesmere Port PCN



# One Ellesmere Port Community Partnership

*Working Together for Ellesmere port*

## Priorities 2024/2025

1. Reduce falls and social isolation in elderly.
2. Reduce harm from drug and alcohol addiction.
3. Encourage healthy eating and exercise in families and improve family wellbeing.

## Projects:

1. Promoting the dissemination of information and use of directories, ensuring it is accessible to all
2. Give local groups the opportunity to show case their services and share experience.
3. Raise awareness of self-care to prevent falls and social isolation

## Our Partners



## Outcomes / Measures

1. Use of platforms and methods to share information
2. Utilisation of services and resources
3. Community feedback