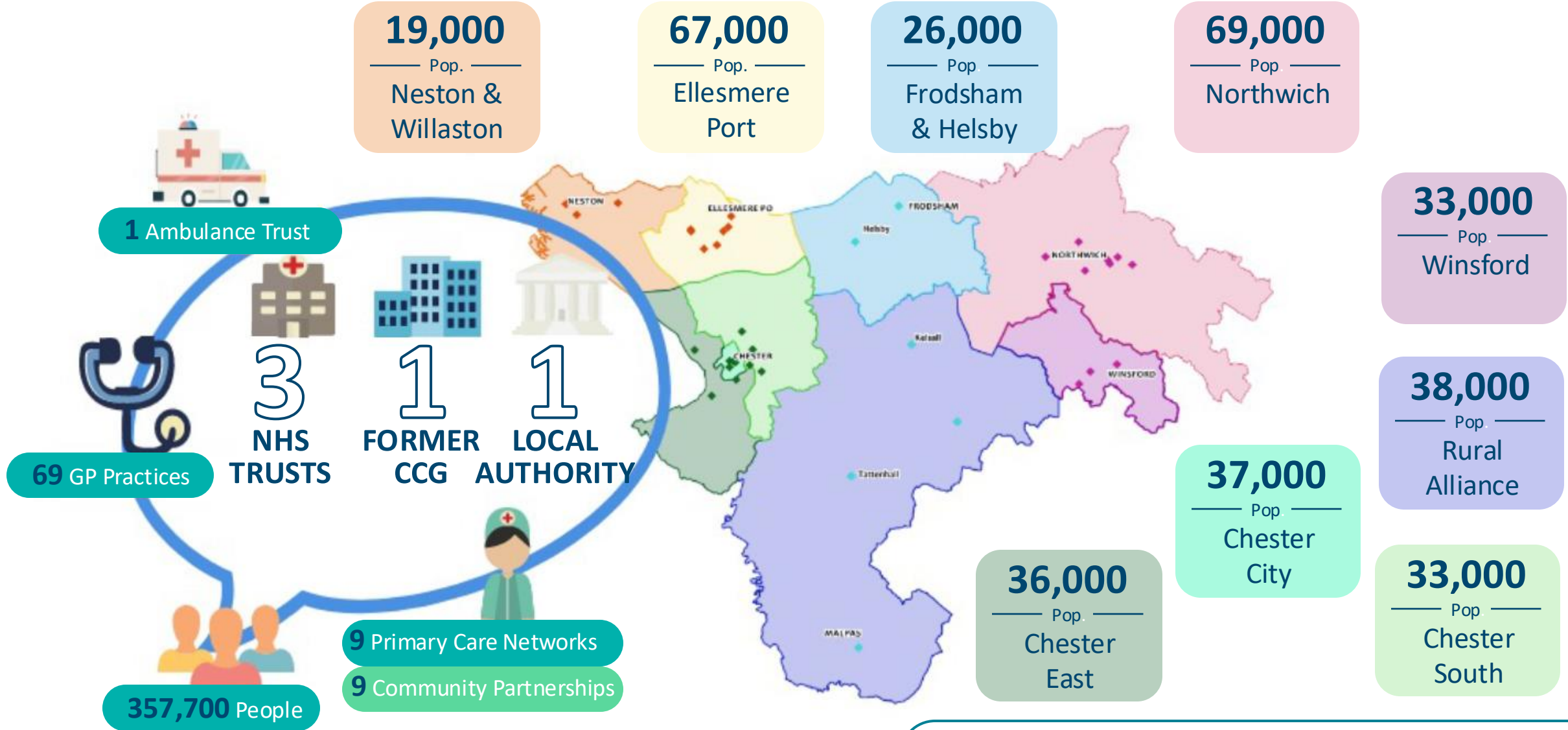


# Neston and Willaston Community Partnership Storyboard 2024-2025

Clinical Lead – Dr Jeremy Perkins  
Community Lead – Rachael Furey  
Facilitation Lead – Jenny Carlyle

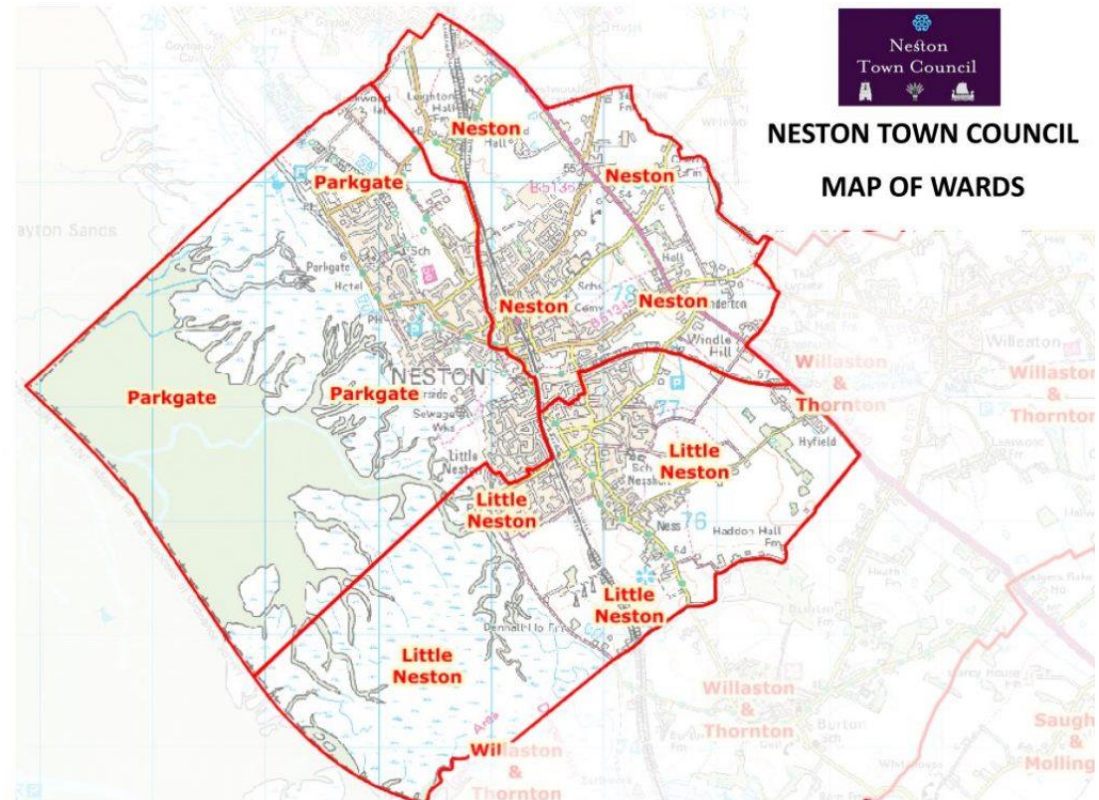


# Cheshire West Place



# Ward Profiles

- Neston and Willaston Community Partnership covers the following wards:
- Little Neston
- Neston
- Parkgate
- Willaston and Thornton



## Cheshire West and Chester Ward Profiles

[Home](#)[Back](#)

Select ward(s)

Little Neston

Select indicator(s)

All

[View  
localities](#)[View  
community  
partnerships](#)

This page presents the 'tartan rug', showing how each ward within Cheshire West and Chester compares with other wards in the borough across the range of themes and indicators within the profile. Multiple ward groupings can be selected from this page, or use the buttons to the right where locality/community partnership area groupings of wards can be selected.

**Due to the large amount of data on this page, filtering of the data may take up to one minute to complete.**



Area	All casualties from road traffic collisions	Anti-Social Behaviour Rate	Attainment 8 score	Average Co2 emissions	Children in low income families	Deaths from all cancer	Deaths from circulatory diseases	Deaths from respiratory diseases	Economically active	Emergency hospital admissions	Energy Efficiency	Ethnic minority population	Free School Meals Primary
Little Neston	215.2	2.1	47.2	4.6	10.0%	89.4	88.4	75.5	49.6%	94.6	24.6%	4.6%	9.0%

## Cheshire West and Chester Ward Profiles

[Home](#)[Back](#)

Select ward(s)

Neston

Select indicator(s)

All

[View  
localities](#)[View  
community  
partnerships](#)

This page presents the 'tartan rug', showing how each ward within Cheshire West and Chester compares with other wards in the borough across the range of themes and indicators within the profile. Multiple ward groupings can be selected from this page, or use the buttons to the right where locality/community partnership area groupings of wards can be selected.

**Due to the large amount of data on this page, filtering of the data may take up to one minute to complete.**



Area	All casualties from road traffic collisions	Anti-Social Behaviour Rate	Attainment 8 score	Average Co2 emissions	Children in low income families	Deaths from all cancer	Deaths from circulatory diseases	Deaths from respiratory diseases	Economically active	Emergency hospital admissions	Energy Efficiency	Ethnic minority population	Free School Meals Primary
Neston	525.0	12.3	43.1	3.6	21.0%	79.1	107.8	100.0	52.1%	125.0	53.0%	6.9%	28.6%



## Cheshire West and Chester Ward Profiles

[Home](#)[Back](#)

Select ward(s)

Parkgate

Select indicator(s)

All

[View  
localities](#)[View  
community  
partnerships](#)

This page presents the 'tartan rug', showing how each ward within Cheshire West and Chester compares with other wards in the borough across the range of themes and indicators within the profile. Multiple ward groupings can be selected from this page, or use the buttons to the right where locality/community partnership area groupings of wards can be selected.

**Due to the large amount of data on this page, filtering of the data may take up to one minute to complete.**



Area	All casualties from road traffic collisions	Anti-Social Behaviour Rate	Attainment 8 score	Average Co2 emissions	Children in low income families	Deaths from all cancer	Deaths from circulatory diseases	Deaths from respiratory diseases	Economically active	Emergency hospital admissions	Energy Efficiency	Ethnic minority population	Free School Meals Primary
Parkgate	164.4	4.6	51.0	4.7	11.0%	82.3	73.1	90.6	48.8%	90.2	33.2%	5.0%	11.2%

## Cheshire West and Chester Ward Profiles

[Home](#)[Back](#)

Select ward(s)

Willaston &amp; Thornton

Select indicator(s)

All

[View  
localities](#)[View  
community  
partnerships](#)

This page presents the 'tartan rug', showing how each ward within Cheshire West and Chester compares with other wards in the borough across the range of themes and indicators within the profile. Multiple ward groupings can be selected from this page, or use the buttons to the right where locality/community partnership area groupings of wards can be selected.

**Due to the large amount of data on this page, filtering of the data may take up to one minute to complete.**



Area	All casualties from road traffic collisions	Anti-Social Behaviour Rate	Attainment 8 score	Average Co2 emissions	Children in low income families	Deaths from all cancer	Deaths from circulatory diseases	Deaths from respiratory diseases	Economically active	Emergency hospital admissions	Energy Efficiency	Ethnic minority population	Free School Meals Primary
Willaston & Thornton	1264.8	5.8	45.3	5.8	4.0%	58.5	57.8	88.8	52.0%	82.3	38.0%	4.6%	6.7%

# Ward Profile summary

- Total Population – 20,646
- Percentage of population aged over 65 – 30.3% compared to 21.5% (CW&C) and 18.8% (England and Wales)
- Percentage of population aged 0-15 – 14.5% compared to 17.3% (CW&C) and 18.5% (England and Wales)
- Percentage of residents (over 18) who said their health was ‘bad’ or ‘very bad’ – 4.9% compared to 5.2% (CW&C) and 5.2% (England and Wales)
- Percentage of reception children classed as overweight (including obesity) – 25.5% compared to 19.9% (CW&C) and 22.1% (England and Wales)
- Percentage of year 6 children classed as overweight (including obesity) – 25.1% compared to 34.4% (CW&C) and 36.6% (England and Wales)
- Percentage of children eligible for free school meals – 13.9% compared to 19.1% (CW&C). Worth noting that Neston ward is 28.6%
- Percentage of 1 person (aged 66+) households – 16.9% compared to 13.7% (CW&C) and 12.9% (England and Wales)
- Anti-social behaviour rate – 6.2 compared to 11.3 (CW&C). Worth noting Neston ward is 12.3



If Cheshire West was a village of 100 people..

## Neston & Willaston PCN

### what's the number of people that would..

per 100

actuals

### in a year they would have..

#### Filters

Clear all filters

#### Select your area

- ☐ Cheshire & Merseyside
- ☐ Cheshire East
- ☒ Cheshire West
- ☐ Halton
- ☐ Knowsley
- ☐ Liverpool
- ☐ Sefton
- ☐ St Helens
- ☐ Warrington
- ☐ Wirral

#### Age band

All

#### PCN

Neston & Willaston PCN

#### Neighbourhood

All

#### Practice Name

All

#### Gender

All

#### Have depression



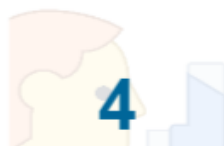
compared to C&M: +0

#### Have diabetes



compared to C&M: +0

#### Have asthma



compared to C&M: +1

#### Have COPD



compared to C&M: -1

#### Have a history of heart failure



compared to C&M: +0

#### Have cancer



compared to C&M: +0

#### Have dementia



compared to C&M: +0

#### Have heart disease



compared to C&M: +0

#### Have a history of epilepsy



compared to C&M: +0

#### Have hypertension



compared to C&M: +1

#### Be current smokers



compared to C&M: -2

#### Have a history of stroke



compared to C&M: +0

#### Have learning disabilities



compared to C&M: +0

#### Have palliative end of life care



compared to C&M: +0

#### Have Chronic Kidney Disease



compared to C&M: +0

#### Have a history of obesity (BMI 30+)



compared to C&M: +0

#### AE visits



compared to C&M: -33

#### Mental Health appts



compared to C&M: +0

#### Emergency admissions



compared to C&M: -5

#### First OP appts



compared to C&M: -3

#### Follow-up OP appts



compared to C&M: +49

#### Elective admissions



compared to C&M: +13

#### 999 calls



compared to C&M: -1

#### 111 calls



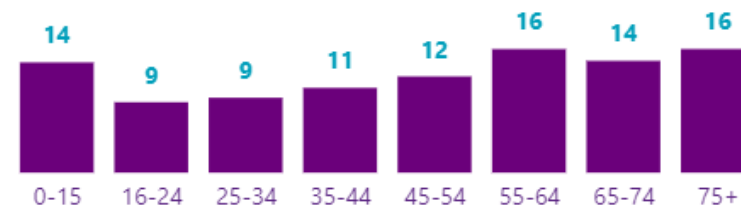
compared to C&M: -6

#### Length of stay (total days)



compared to C&M: +2

### They would be aged..



# 3 GP Practices

- There are 3 GP Practices in Neston and Willaston PCN. These are 2 practices in Neston and 1 in Willaston.



**Neston Medical Centre**



**Neston Surgery**



**Willaston Surgery**



Steering Group  
Meet 3rd Wednesday of month 2-4pm at NCYC

C&YP and Mental  
Health subgroup  
Meet 2nd Wed of  
month 10.am on Teams  
at NCYC

Older People and  
Dementia subgroup  
Meet 4th Wed of  
month 1-2pm at NCYC

Border Issues subgroup  
Meet 2<sup>nd</sup> wed of month  
1-2pm on Teams at  
NCYC

C&YP advisory group  
Meet 2<sup>nd</sup> Thur of  
month 4.30-5.30pm at  
NCYC



# Neston and Willaston Community Partnership Priorities

## Improvement in provision for children and young people

- Develop C&YP advisory group to provide lived experience information to the C&YP and Mental health sub group.

## Increasing provision of social opportunities

- Develop Full Circle Intergenerational Group
- Support and promotion of existing activities in the local area

## Older People and Dementia

- Develop CH64 into a dementia friendly town

## Lack of discharge support for CH64 patients in WUTH

- Address gap in provision for CH64 patients in WUTH due to cross border issues. Develop discharge support service to reduce delays in discharges, reduction in readmissions due to social issues and improvement in patients wellbeing.



# Group Projects 2024-2025

## Steering Group

- Working within our three groups providing health and care in the community

## Older People and Dementia

Help support and advice for Older People

## Border Issues

- To improve the care and communication process between Wirral and Cheshire Hospitals

## Mental Health & Young People

- To create new provisions to support Mental Health and Young People in the Community

# Projects 2024 - 2025

- Full circle Intergenerational Group – partnership working
- Breastfeeding group increase in attendance
- Set up C&YP advisory group
- Addressing discharge support – low level support via NCYC funded via CCA.
- Addressing discharge support – complex discharge support, ongoing
- Supported matinees
- Support and promotion of existing activities in the local area





## Neston

A range of people available to talk to you about your wellbeing and provide you with information and advice about things available in your local area.

From your health and housing to local social opportunities and support with care.

Come and have a **different conversation.**

We'll be in  
**Neston Library**  
**Every Tuesday**  
**1pm-2.30pm**

Please pop by and we'll do what we can to help.

Visit: [cheshirewestandchester.gov.uk/letstalkhealth](https://cheshirewestandchester.gov.uk/letstalkhealth)

- Neston and Willaston Community Partnership has been happy to work with our partners in Neston and Willaston to set up a face-to-face drop-in session called Let's Talk, where local people can come to access information and advice.
- At our Let's Talk site residents can expect a range of people available to talk providing them with information and advice about things available in their local areas. From their health and housing to local social opportunities and support with care, we want residents to come and have a different conversation.
- Access community activities
- Mental Health support
- Cost of Living advice and support
- Support with Social Isolation
- Carer support
- Employment opportunities

# Neston and Willaston Community Partnership Summary

working in partnership to support local people to live healthier,  
connected and happier lives!

## Priorities 2024/2025

- Develop C&YP advisory group to provide lived experience information to the C&YP and Mental health subgroup.
- Address gap in provision for CH64 patients in WUTH due to cross border issues. Develop discharge support service to reduce delays in discharges, reduction in readmissions due to social issues and improvement in patient wellbeing.
- Develop CH64 into a dementia friendly town
- Develop Full Circle Intergenerational Group
- Support and promotion of existing activities in the local area

## Projects:

Subgroups to be formulated to focus on:

Full circle Intergenerational Group – partnership working

Breastfeeding group increase in attendance

Set up C&YP advisory group

Addressing discharge support – low level support via NCYC funded via CCA.

Addressing discharge support – complex discharge support, ongoing

Supported matinees

Support and promotion of existing activities in the local area

## Partners:



## Outcomes / Measures

1. Attendance figures for activities and groups
2. Discharge data
3. Community feedback

# Projects 2025 - 2026