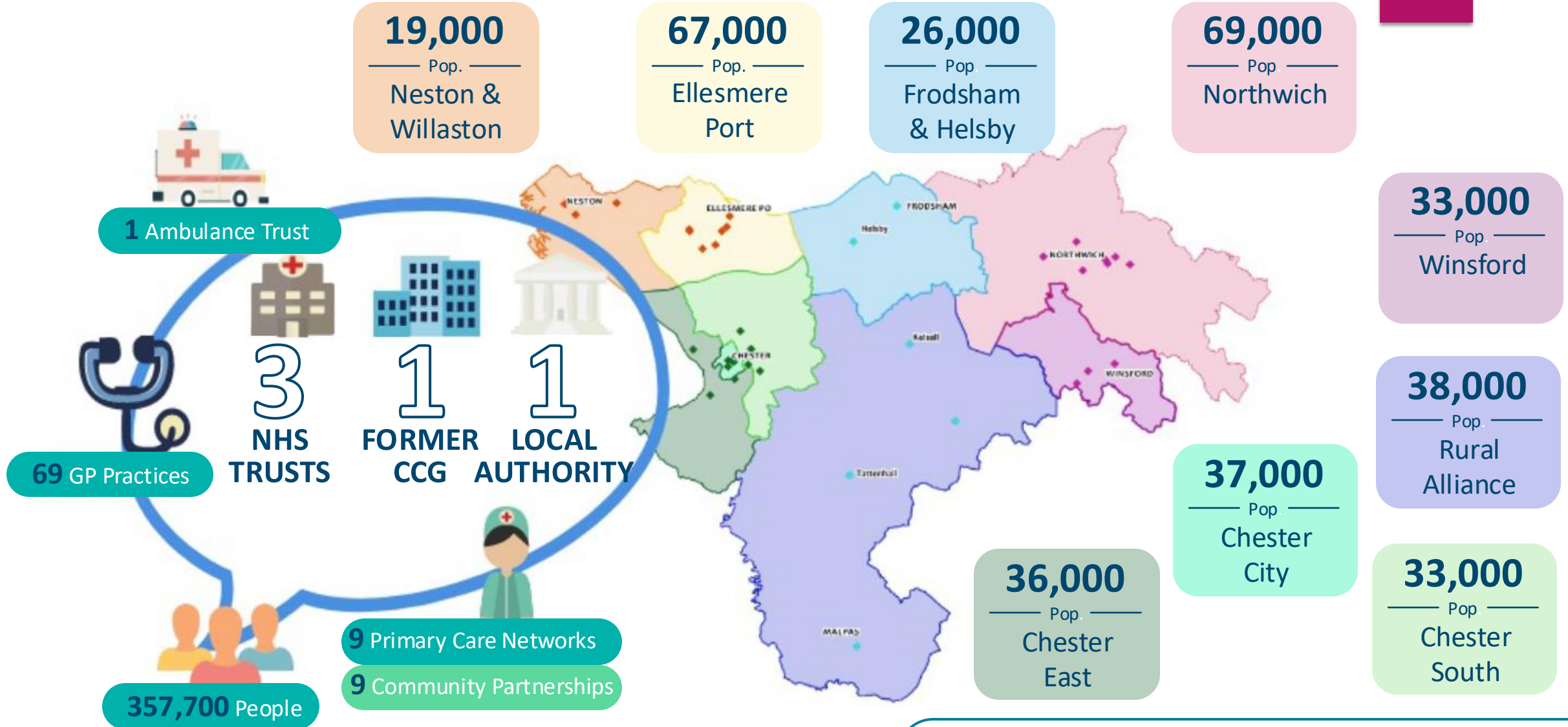




# Northwich Community Partnership Storyboard 2025

# Cheshire West Place



Northwich is a market town in the centre of the Cheshire Plain and at the junction of the Rivers Dane and Weaver.

Northwich is one of the three Cheshire 'wiches' of salt-producing heritage.

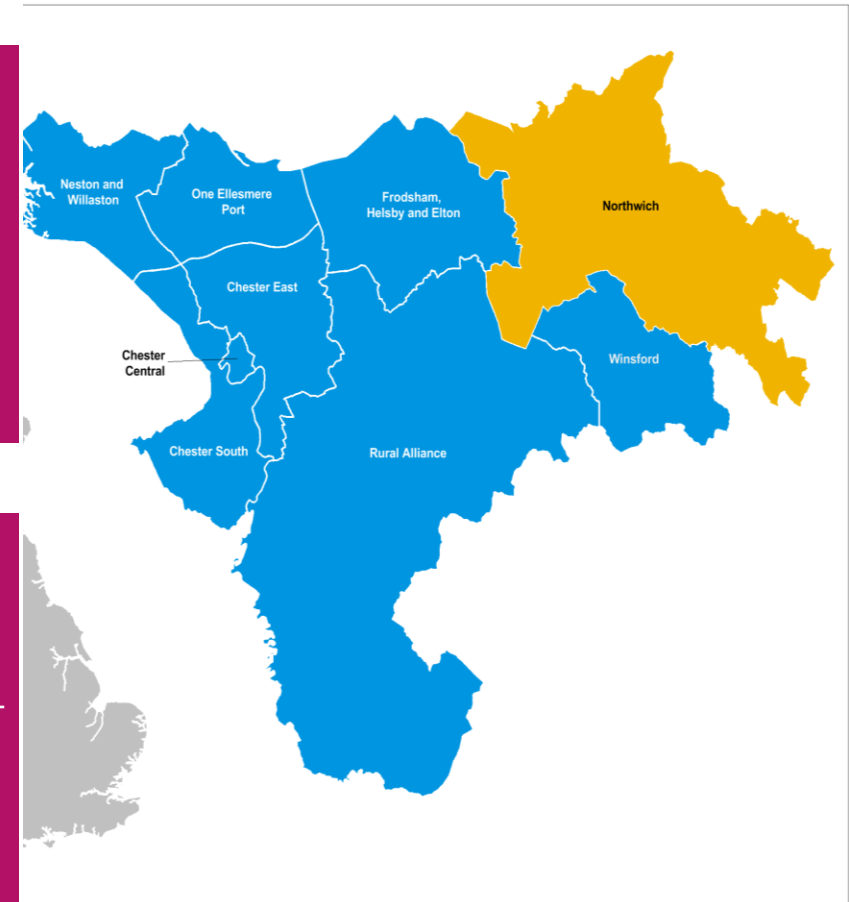
Northwich has plenty of parks, museums and attractions with many linking back to the area's close ties to the salt industry.



# Northwich population and surrounding area

Northwich has a population of over 70,000 and is one of nine Community Partnerships in Cheshire West

The borough of Cheshire West and Chester covers approximately 350 square miles and is the fourth largest unitary authority in the North West with just over a quarter living in rural areas.



Around 357,669 people live in Cheshire West with just over a quarter living in rural areas. This is an older population than the England average.

The population is forecast to increase by more than 10 per cent by 2038, with the greatest increase expected in those aged 65 or over.



# Inequality and Deprivation

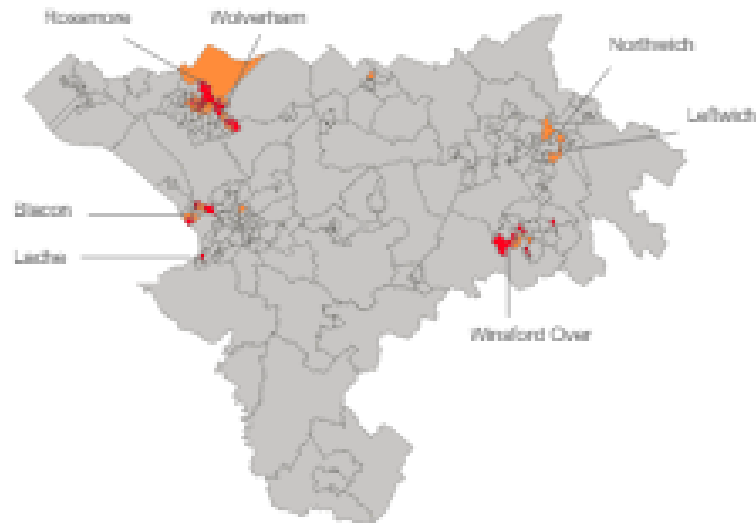
Navigation

## Index of Multiple Deprivation (IMD)

The English Indices of Deprivation 2019 measures relative levels of deprivation in small areas or neighbourhoods across England and divides them into 10 equal groups (or deciles) according to their deprivation rank.

### Neighbourhoods that rank in the top 20% most deprived in England

● Decile 1 (10% most deprived) ● Decile 2 (20% most deprived)



The highest levels of deprivation are found in the urban areas of Cheshire West and Chester, primarily within the City of Chester, and the towns of Ellesmere Port, Northwich and Winsford.

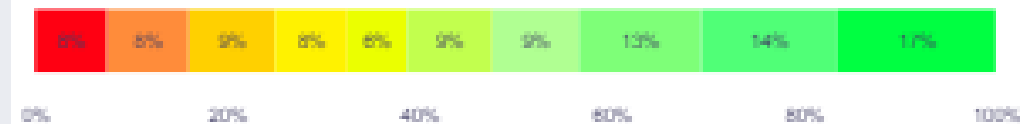
26,731

Residents living in neighbourhoods that rank in the top 10% most deprived in England (decile 1)

### Proportion of neighbourhoods in each decile

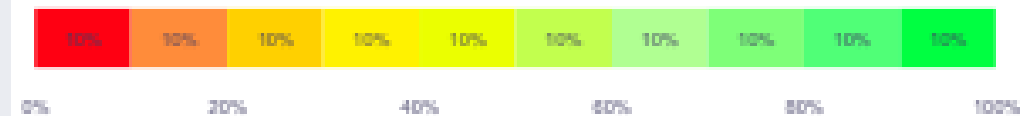
Cheshire West and Chester

Deprivation decile ● 1 ● 2 ● 3 ● 4 ● 5 ● 6 ● 7 ● 8 ● 9 ● 10



England

Deprivation decile ● 1 ● 2 ● 3 ● 4 ● 5 ● 6 ● 7 ● 8 ● 9 ● 10



Areas in Rudheath, Northwich Leftwich and Northwich Witton were identified as decile 2 (20% most deprived) Index of Multiple Deprivation 2019

# If Northwich was a village of 100 people.....



If Cheshire West was a village of 100 people..



what's the number of people that would..

per 100

actuals

Filters

Clear all filters

Select your area

- Cheshire & Merseyside
- Cheshire East
- Cheshire West
- Halton
- Knowsley
- Liverpool
- Sefton
- St Helens
- Warrington
- Wirral

Age band

All

PCN

Northwich PCN

Neighbourhood

Northwich PCN

Practice Name

All

Gender

All

Have depression



compared to C&M: -1

Have diabetes



compared to C&M: +0

Have asthma



compared to C&M: +1

Have COPD



compared to C&M: +0

Have a history of heart failure



compared to C&M: +0

Have cancer



compared to C&M: +0

Have dementia



compared to C&M: +0

Have heart disease



compared to C&M: +0

Have a history of epilepsy



compared to C&M: +0

Have hypertension



compared to C&M: +2

Be current smokers



compared to C&M: -1

Have a history of stroke



compared to C&M: +0

Have learning disabilities



compared to C&M: +0

Have palliative end of life care



compared to C&M: +0

Have Chronic Kidney Disease



compared to C&M: +0

Have a history of obesity (BMI 30+)



compared to C&M: +0

in a year they would have..

AE visits



compared to C&M: -6

Mental Health appts



compared to C&M: +0

Emergency admissions



compared to C&M: -2

First OP appts



compared to C&M: -9

Follow-up OP appts



compared to C&M: -41

Elective admissions



compared to C&M: -2

999 calls



compared to C&M: +0

111 calls



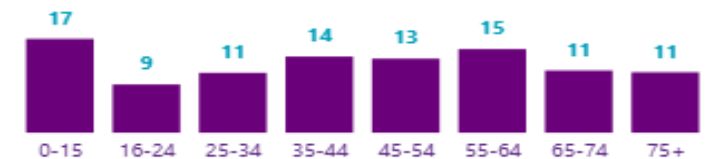
compared to C&M: +3

Length of stay (total days)



compared to C&M: +2

They would be aged..



# Northwich GP Practices

▶ There are 7 GP Practices in Northwich

- Danebridge Medical Centre with a branch site at Kingsmead Medical Centre
- Firdale Medical Centre
- Middlewich Road Surgery
- Watling Street Surgery
- Weaverham Surgery
- Witton Street Surgery
- Oakwood Medical Centre



# Northwich Community Partnership Group.

- Northwich Community Partnership Group meet bi-monthly.
- The group consists of individuals, community groups and health and care professionals that support the people of Northwich to stay healthy and well closer to home.
- Prevention and early intervention is at the core of what we do, designing tailor made services to help improve the health and well being of the residents of Northwich.

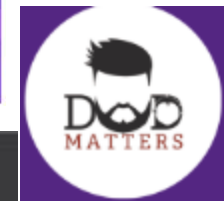




# Membership...



(translation . training . feedback)



## What does the data say about our area?

- ▶ **No single place** or hub in Northwich to access support services.
- ▶ Northwich experiences **pockets of deprivation**
- ▶ Northwich has areas where the population are at **risk of digital exclusion**
- ▶ **Falls related admission rates** to hospitals **are high**
- ▶ **Cardiovascular disease (CVD)** poses a significant public health challenge in Northwich

# Northwich Community Partnership Priorities

## Accessibility and Space in Northwich

- **The aim of our work is to find out transport options, space available and any barriers in Northwich**
- Sought transport options in Northwich
- Promoted use of building directory & Livewell site and 'Lets Talk about Transport' consultation in 2025
- Launch of Lets Talk at The Community Hub – Barons Quay Northwich

## Navigating and Communicating information in Northwich

- **Identify ways of sharing information so accessible to all.**
- Identified Notice Boards to communicate information
- Regularly update Northwich Community partnership FaceBook pages
- Advertising in Northwich Directory with themed editions

## Cost of living, debt and finances

- **Explore the cost of living impacts and barriers in Northwich**
- lived experience and community inspirers co production work
- 'Have your Say event'
- Subgroup follow up to inform work

## Falls

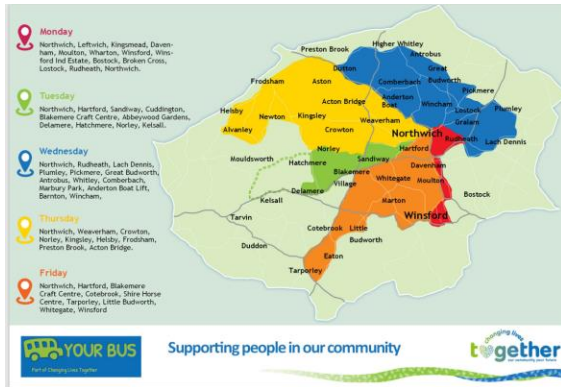
- **Reduce risk of falls and impact for Northwich residents**
- Vale Royal Falls Lead attends meetings and collaborating with Partnership members
- Promotion of Steady on your feet platform for residents to use, referrals to Cheshire Age UK Home hazard Assessment and Advice Service

## Cardiovascular Disease

- **To raise awareness of cardiovascular disease and seek prevention strategies in Northwich**
- Dataset provided to collaborate with Northwich PCN and members prevention mapping
- Utilising resources available

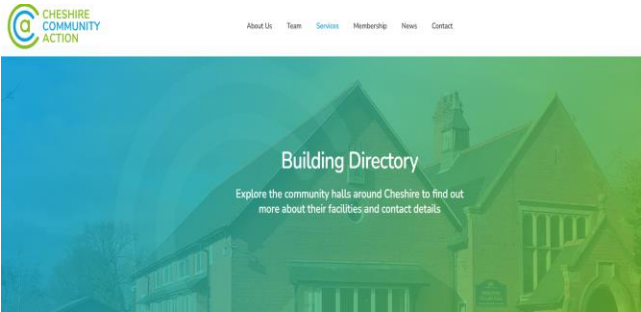


# Accessibility & Space in Northwich



Found out about what are the **transport options** in Northwich with Partnership members such as Changing Lives Together

Visited **groups** in Northwich to find out barriers – now 'usual business'



Promoted use of **building directory** and **Livewell** site to Partnership members

**The future of transport**  
isn't just about how we get around

Get involved by scanning this QR Code or:  
 Visit: [cheshirewestandchester.gov.uk/LTP4](https://cheshirewestandchester.gov.uk/LTP4)  
 Email us at: [LTP4@cheshirewestandchester.gov.uk](mailto:LTP4@cheshirewestandchester.gov.uk)  
 Call us on: 0300 1238 123 quoting 'LTP4'  
 Closing date 28 January 2024



Cheshire West and Chester

Community Partnership engagement in online survey and consultation in 2025  
'Lets Talk about Transport'



# Accessibility & Space in Northwich

## Get help with...

Going online

Finding local groups and activities

Benefits and more with Citizens Advice

Housing issues

Getting a job

Care and support

Accessing mental health support



at the

# Community Hub

**Every Thursday, 10am-4pm**  
No.7 Baron's Quay, Northwich  
(opposite Wildwood)

•From November 6th, **residents will be able to access a wide range of help** at a new community hub at Barons Quay.

•Welfare Benefits advisors, Employment Directions mentors and a social prescriber will be on site along with **digital skills support.**

•The team will work together to meet people's needs and to support them to access services not present, either **on screen or via supported referral.**

# Navigating and communicating information

Formulated **list of Notice Boards** in and around Northwich which has been circulated to members. There is contact information on and preferred formats to be displayed



[Northwich Community Partnership | Northwich | Facebook](#)

Northwich Community Partnership have a **facebook page** where we encourage members too and we post regularly to **296 followers and 50 following**

Northwich Community Partnership are advertising in **Northwich Directory** to reduce health inequalities arising from digital exclusion



**The Effective Directories**  
SANDBACH • NORTHWICH • CONLETON • HOLMES CHAPEL • WISTFORD



# Cost of Living, finance & debt



Have your say...  
..at our Northwich cost of living conversations

'Have your say' is being held at:

Do you know what financial help is out there?

Could you share experiences with us?

What would have made your experience better?

- Come along for a tea or coffee and some biscuits
- Lets make a difference together

- For further information on Community Partnerships working
- Visit our Facebook Page [www.facebook.com/NorthwichCommunityPartnership](http://www.facebook.com/NorthwichCommunityPartnership)
- Visit Cheshire West Voluntary Actions Pages at [www.cwva.org.uk/communitypartnerships](http://www.cwva.org.uk/communitypartnerships)

Or for further information please contact:  
Natalie - Northwich Community Partnership Chair  
Email : [natalie.kendal@mcht.nhs.uk](mailto:natalie.kendal@mcht.nhs.uk)

NORTHWICH COST OF LIVING- WORKING TOGETHER TO IMPROVE



Community Inspirers

Follow up meeting  
over teams to review  
findings

Subgroup meeting  
scheduled for  
November 2025

# Falls



Feel unsteady when standing or walking?

Have you tripped over before?

Worry about losing your balance?

Use our website to help you stay active & independent

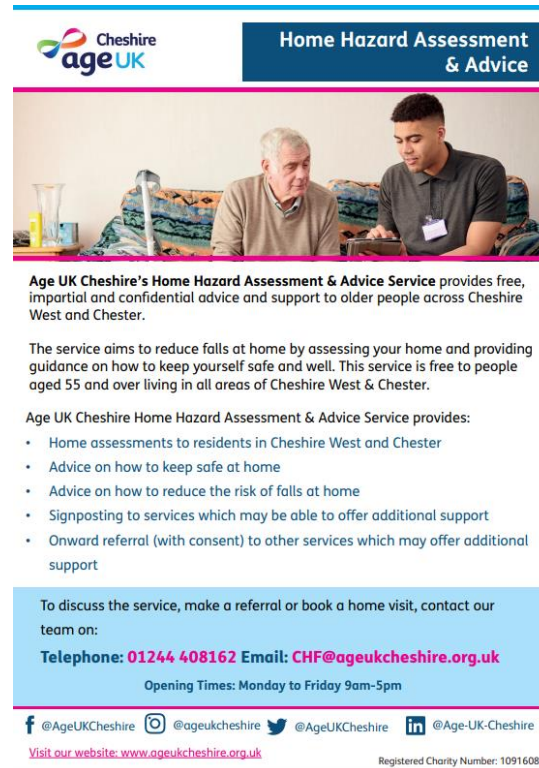
**STEADY ON YOUR FEET**  
Cheshire

- ▶ Complete a guided self-assessment
- ▶ Download a personalised action plan
- ▶ Discover exercise ideas & local services
- ▶ Read about home hazards & safety

scan the QR code, or visit:  
[www.steadyonyourfeet.org/cheshire](http://www.steadyonyourfeet.org/cheshire)

Cheshire West and Chester | NHS Cheshire and Merseyside | Cheshire East Council

Total Users October : 788 up from 669 in September



Cheshire ageUK

**Home Hazard Assessment & Advice**

Age UK Cheshire's Home Hazard Assessment & Advice Service provides free, impartial and confidential advice and support to older people across Cheshire West and Chester.

The service aims to reduce falls at home by assessing your home and providing guidance on how to keep yourself safe and well. This service is free to people aged 55 and over living in all areas of Cheshire West & Chester.

Age UK Cheshire Home Hazard Assessment & Advice Service provides:

- Home assessments to residents in Cheshire West and Chester
- Advice on how to keep safe at home
- Advice on how to reduce the risk of falls at home
- Signposting to services which may be able to offer additional support
- Onward referral (with consent) to other services which may offer additional support

To discuss the service, make a referral or book a home visit, contact our team on:  
**Telephone: 01244 408162 Email: [CHF@ageukcheshire.org.uk](mailto:CHF@ageukcheshire.org.uk)**

Opening Times: Monday to Friday 9am-5pm

@AgeUKCheshire @ageukcheshire @AgeUKCheshire @Age-UK-Cheshire  
Visit our website: [www.ageukcheshire.org.uk](http://www.ageukcheshire.org.uk)

Registered Charity Number: 1091608

Vale Royal Falls Lead collaborating with Partners to educate on falls risk and preventative work



# Cardiovascular Disease Prevention

Northwich CVD dataset shared by CWVA

Northwich PCN looking at how to take CVD prevention work forward

Mapping of CVD prevention activities within Community Partnership – ask to share guidance and definitions to aid organisations engagement.

A promotional poster for the Active Cheshire Sport Welfare Officer Network. At the top left are logos for Active Partnerships, Sport Cheshire, and Sport England. The main title is "SPORT WELFARE OFFICER NETWORK". Below it, text states: "Providing free, local and professional welfare support for Sports and Physical activity clubs across Cheshire and Warrington. Here to support Club Welfare Officers and welfare needs. Please contact Lauren for an informal chat or scan the QR code for further information on the SWO network." A central graphic titled "OUR UNIVERSAL OFFER IS:" shows a circular flow of four quadrants: "CONNECT" (red arrow), "SUPPORT" (blue arrow), "RAISE AWARENESS" (grey arrow), and "ENABLE" (green arrow). Each quadrant has a brief description of its role. On the right side, there is a circular profile picture of Lauren Sage, her name "Lauren Sage", her contact number "07842306950", her email "lauren.sage@activecheshire.org", and a QR code.

Shared details of Active Cheshire's Sport Welfare Officer Network



# Supporting Dementia Friendly Northwich



## Funded Bright Memory Sessions

Run from our newly refurbished centre in Northwich, the Bright Memories groups are for people living with memory loss and/or early-mid stages of dementia

Our sessions offer fun, friendship, and stimulation through creative and musical activity, topical discussion, physical activity, quizzes & word/number games.

We offer **Maintenance Cognitive Stimulation Therapy (MCST)**. This is the only non-drug treatment specifically recommended to improve cognition, independence and wellbeing for individuals living with mild to moderate dementia by the National Institute for Health and Care Excellence (NICE).

For me it means that my husband can access activities which stimulate his mind in a sociable and enjoyable environment. I can stand down, albeit for only a few hours, from trying to occupy him, once a busy and motivated man.

Why not arrange a taster session? The group is run on Monday, Wednesday and Friday.

For more information please call us on **07917 638820**  
Email: [brightmemories@ageukcheshire.org.uk](mailto:brightmemories@ageukcheshire.org.uk)

The Northwich Community Partnership funded a number of initial taster sessions (usually £10) plus 2 further sessions per patient for individuals who may not be able to afford costs. Referral are through Social Prescriber.



## Admiral Nurse support appointment

Northwich Community Partnership promotes Dementia UK and Nationwide's offer to Community Partnership Members to signpost Northwich residents for support

**Buddy and Befriending** **Cheshire West Voluntary Action** **UKSPF**

## Crafters Tea

Do you enjoy afternoon tea and a chance to meet new people?  
Do you enjoy puzzles, crafts & games?  
Bring your own or try something new!

**Rudheath Social Club**  
**Thursday 23<sup>rd</sup> October**  
**£4 per session**

Booking essential via  
[julie.birtwistle@changing-lives-together.org.uk](mailto:julie.birtwistle@changing-lives-together.org.uk)  
or 07597586650. Over 18s only.

## Changing Lives Together event

We promote events with our Community Partnership members so residents of Northwich are aware of support available

# Supporting Living Well Service into Northwich

"Since collaborating with the Living Well service, the support we've received from the Community Partnership has been exceptional. Cheshire West has historically been a challenging area for us to engage with at a community level, but this partnership has provided a vital local connection. It has enabled us to secure new venues at the heart of the most vulnerable communities, helping us address health inequalities more effectively. Over the past five months, the service has delivered 238 health checks, 692 COVID-19 vaccinations, and 12 routine immunisations – all within communities identified as under-served in Cheshire West. We are thankful for their ongoing support." Gerri Marsh, Interims Operations Manager, CWP.



## The Living Well Team

- Winter vaccinations
- Health screening
- Routine vaccinations
- Anything that's concerning you

Visiting your area:

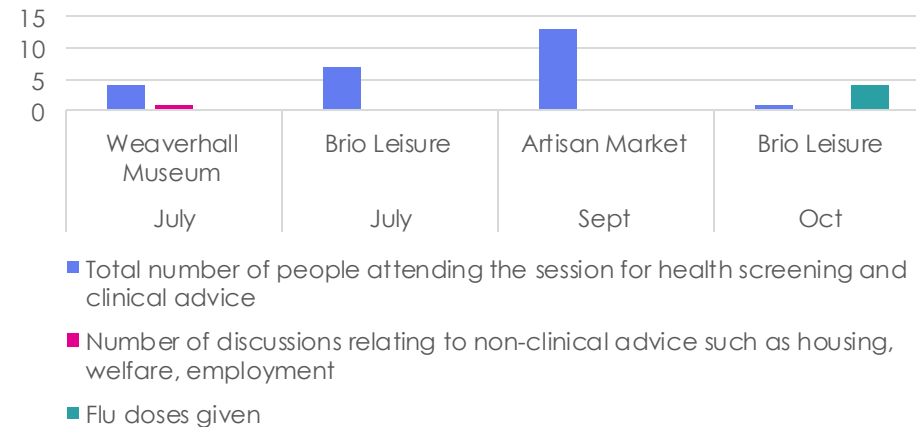
**Date: Saturday 1<sup>st</sup> November 2025**  
**Time: 10:30 am – 4pm**

Brio Leisure  
Chesterway, Northwich  
CW9 5QJ

[Find out more: cwp.nhs.uk/livingwellservice](http://cwp.nhs.uk/livingwellservice)



Living Well Service Northwich



## Northwich Community Partnership Priorities

### Accessibility and Space in Northwich

- The aim of our work is to find out about what are the transport options in Northwich, what space is being utilised and available and are there any barriers that we can address to encourage residents of Northwich to access spaces and support services

### Navigating and Communicating information in Northwich

- To identify ways of sharing information about local services, both internally (within the community partnership) and with community as a whole and to ensure information is shared in a way that's accessible to all.

### Cost of living, debt and finances

- To explore the cost of living impacts and barriers in Northwich with lived experience and community inspirers to provide the most appropriate outputs.

### Falls

- Our place priority – to reduce impact and effects of falls in Northwich residents

### Cardiovascular Disease

- Prevention mapping
- PCN engagement for targeted intervention work

## Projects

1. Development of Northwich Community Hub with Lets Talk
2. Themed editions of Northwich Directory to promote organisations and Partnership
3. Have your say cost of living event
4. Falls awareness engagement
5. Health & Wellbeing events in Northwich
6. Live Well Service Bus locations in Northwich

## Membership...



## Outcomes / Measures

1. Number of residents seeking support at Community Hub and uptake, where did you hear about us?
2. Awareness of Northwich Community Partnership and links with organisations
3. Impactful working to address cost of living
4. Steady on your feet data
5. CVD prevention data
6. Number of stalls, attendance and take aways from Health & Wellbeing Event
7. Numbers of residents accessing LiveWell bus support services and vaccine along with awareness of service.