

ONE CHESTER

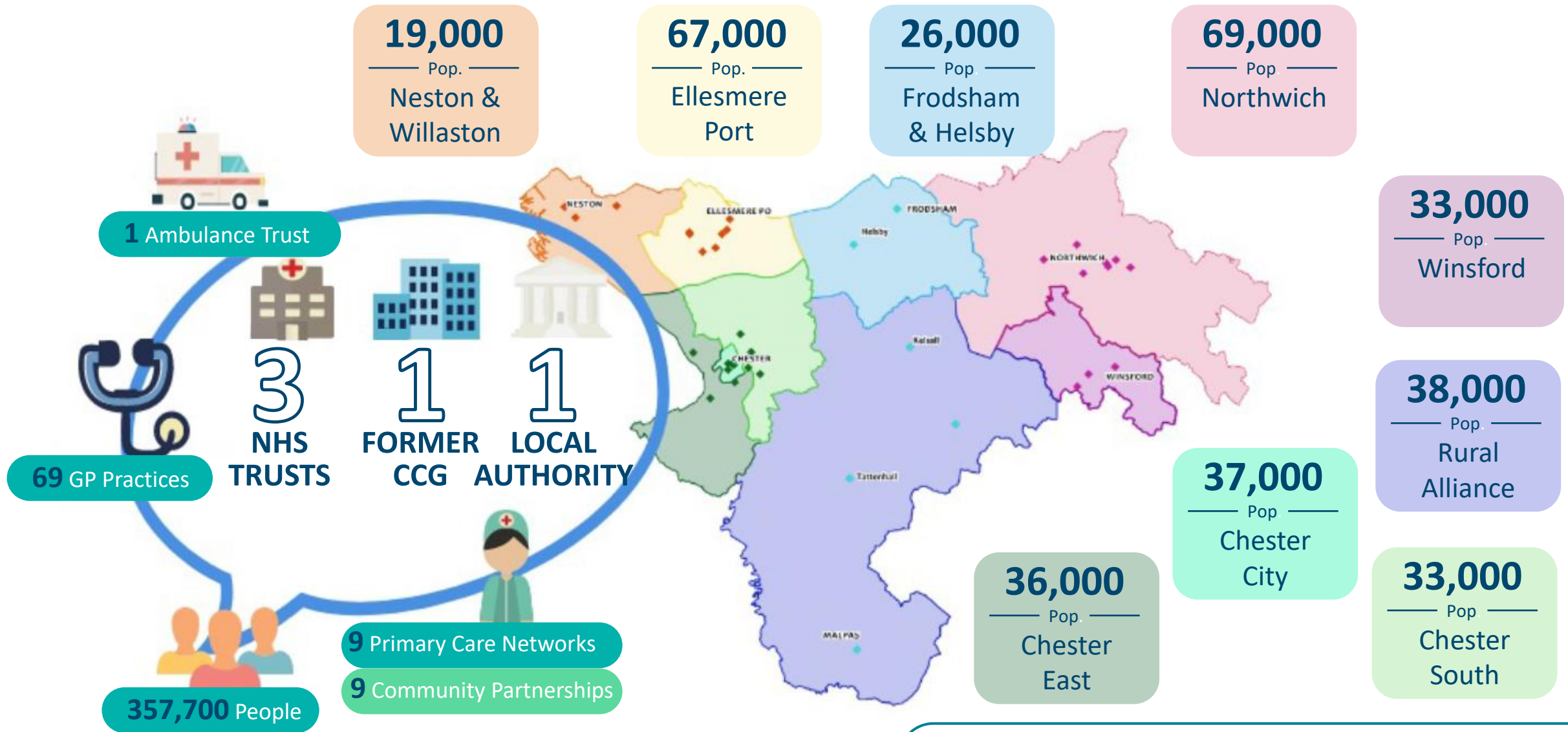
Storyboard

2025

One Chester Community Partnership is a *collaborative* network of partners across sectors—public, private, voluntary, and community working *closely together* to address *health inequalities*, improve *wellbeing*, and *empower* local communities



Cheshire West Place



Chester

- Chester is a cathedral city and the county town of Cheshire, England, on the River Dee, close to the England-Wales border.
- The city walls of Chester are some of the best-preserved in the country and have Grade I listed status.
- Chester's covered walkways, The Rows, have existed in the city since at least the 13th century. They are completely unique not only in Britain but anywhere in the world



Community Partnership = 3 areas of Chester

Chester
South
PCN

Chester
East PCN

Chester
Central
PCN

Community Partnership

Chester Central

Age group	Population	Percentage
Aged 65+	5,500	16.3%
Aged 16-64	24,440	72.4%
Aged 0-15	3,800	11.3%
Total	33,740	100.0%

33,740

Total population (mid-2022)

18.8% (6,240)

Ethnic minority (2021 Census)

15,335

Households (2021 Census)

Enter an age group (0 to 90+)

0

90

33,740

Population in age group

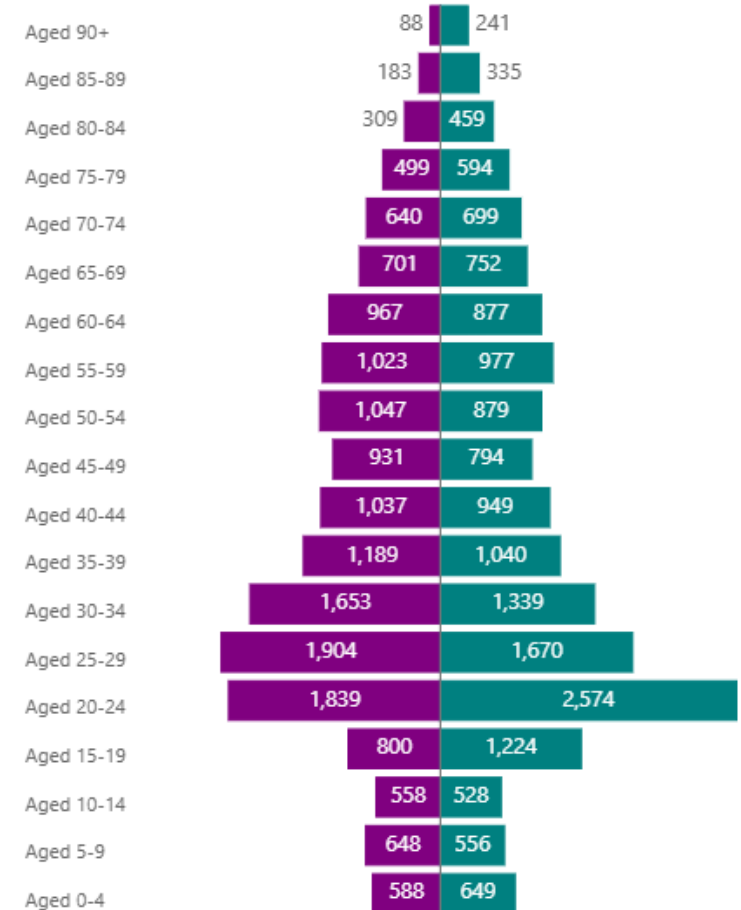
16,771

Dwellings (2021 Census)

Age group	Male	Female	Total
Aged 0-4	588	649	1,237
Aged 5-9	648	556	1,204
Aged 10-14	558	528	1,086
Aged 15-19	800	1,224	2,024
Aged 20-24	1,839	2,574	4,413
Aged 25-29	1,904	1,670	3,574
Aged 30-34	1,653	1,339	2,992
Aged 35-39	1,189	1,040	2,229
Aged 40-44	1,037	949	1,986
Aged 45-49	931	794	1,725
Aged 50-54	1,047	879	1,926
Aged 55-59	1,023	977	2,000
Aged 60-64	967	877	1,844
Aged 65-69	701	752	1,453
Aged 70-74	640	699	1,339
Aged 75-79	499	594	1,093
Aged 80-84	309	459	768
Aged 85-89	183	335	518
Aged 90+	88	241	329
Total	16,604	17,136	33,740

Population by age group and gender

● Male ● Female



Source: Mid-year population estimates (built up from ward estimates) and 2021 Census, Office for National Statistics (ONS), Contains public sector information licensed under the Open Government Licence v3.1.

Note: ONS advises caution if using numbers of single years of age, as these would not be expected to have the same level of accuracy as the aggregated estimates. ONS generally recommends rounding population estimates to the nearest 100.

Definitions (2021 Census) : Dwelling = Accommodation occupied by or available for occupation by a household.

Household = One person living alone / group of people living at the same address (who share cooking facilities and a living room/ dining area).

Ethnic minority (in this report) = All ethnic groups other than White British.

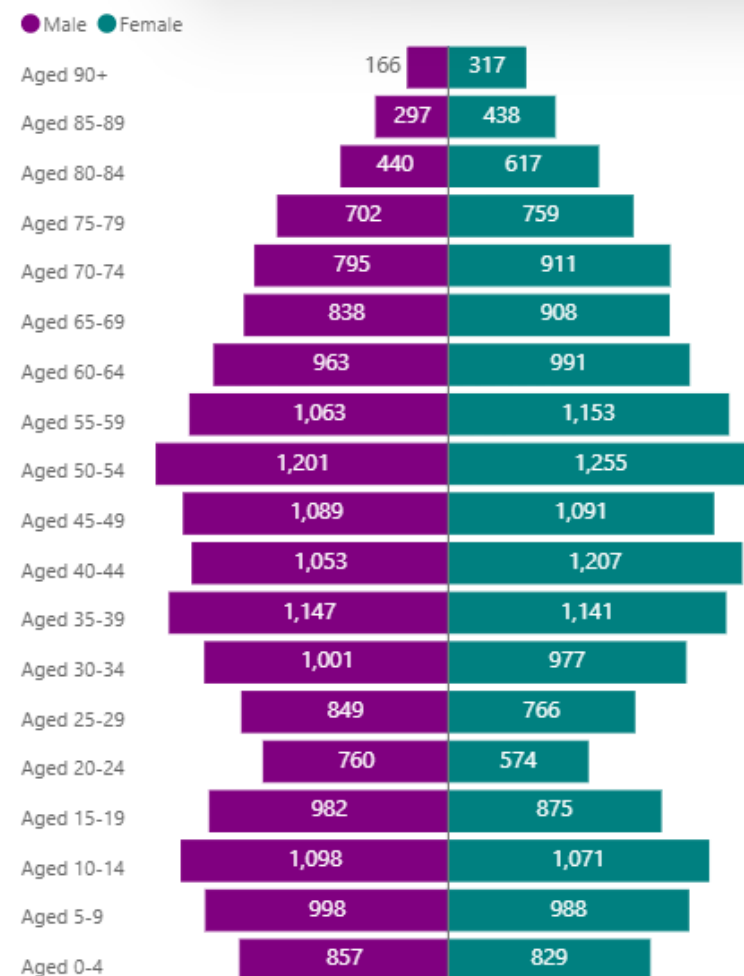
Community Partnership

Chester East

Age group	Population	Percentage
Aged 65+	7,188	21.7%
Aged 16-64	19,725	59.5%
Aged 0-15	6,254	18.9%
Total	33,167	100.0%

Age group	Male	Female	Total
Aged 0-4	857	829	1,686
Aged 5-9	998	988	1,986
Aged 10-14	1,098	1,071	2,169
Aged 15-19	982	875	1,857
Aged 20-24	760	574	1,334
Aged 25-29	849	766	1,615
Aged 30-34	1,001	977	1,978
Aged 35-39	1,147	1,141	2,288
Aged 40-44	1,053	1,207	2,260
Aged 45-49	1,089	1,091	2,180
Aged 50-54	1,201	1,255	2,456
Aged 55-59	1,063	1,153	2,216
Aged 60-64	963	991	1,954
Aged 65-69	838	908	1,746
Aged 70-74	795	911	1,706
Aged 75-79	702	759	1,461
Aged 80-84	440	617	1,057
Aged 85-89	297	438	735
Aged 90+	166	317	483
Total	16,299	16,868	33,167

Population by age group and gender



33,167

Total population (mid-2022)

11.1% (3,624)

Ethnic minority (2021 Census)

13,500

Households (2021 Census)

Enter an age group (0 to 90+)

33,167

Population in age group

14,173

Dwellings (2021 Census)

Source: Mid-year population estimates (built up from ward estimates) and 2021 Census, Office for National Statistics (ONS), Contains public sector information licensed under the Open Government Licence v3.1.

Note: ONS advises caution if using numbers of single years of age, as these would not be expected to have the same level of accuracy as the aggregated estimates. ONS generally recommends rounding population estimates to the nearest 100.

Definitions (2021 Census) : Dwelling = Accommodation occupied by or available for occupation by a household.

Household = One person living alone / group of people living at the same address (who share cooking facilities and a living room/ dining area).

Ethnic minority (in this report) = All ethnic groups other than White British.

Community Partnership

Chester South

Age group	Population	Percentage
Aged 65+	7,320	20.8%
Aged 16-64	21,365	60.8%
Aged 0-15	6,462	18.4%
Total	35,147	100.0%

35,147

Total population (mid-2022)

12.0% (4,165)

Ethnic minority (2021 Census)

15,109

Households (2021 Census)

Enter an age group (0 to 90+)

35,147

Population in age group

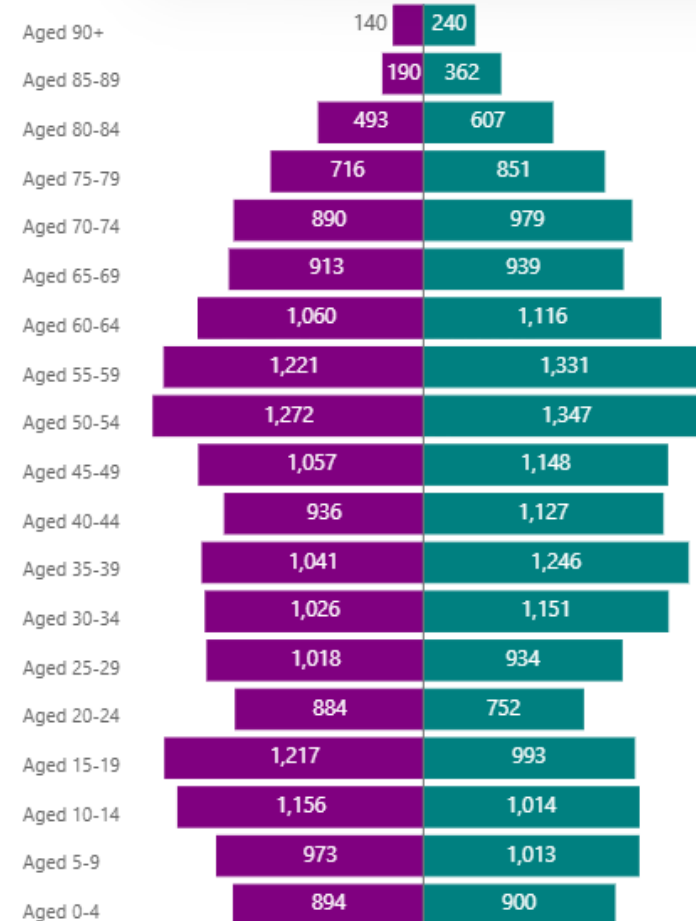
15,769

Dwellings (2021 Census)

Age group	Male	Female	Total
Aged 0-4	894	900	1,794
Aged 5-9	973	1,013	1,986
Aged 10-14	1,156	1,014	2,170
Aged 15-19	1,217	993	2,210
Aged 20-24	884	752	1,636
Aged 25-29	1,018	934	1,952
Aged 30-34	1,026	1,151	2,177
Aged 35-39	1,041	1,246	2,287
Aged 40-44	936	1,127	2,063
Aged 45-49	1,057	1,148	2,205
Aged 50-54	1,272	1,347	2,619
Aged 55-59	1,221	1,331	2,552
Aged 60-64	1,060	1,116	2,176
Aged 65-69	913	939	1,852
Aged 70-74	890	979	1,869
Aged 75-79	716	851	1,567
Aged 80-84	493	607	1,100
Aged 85-89	190	362	552
Aged 90+	140	240	380
Total	17,097	18,050	35,147

Population by age group and gender

Male Female



Source: Mid-year population estimates (built up from ward estimates) and 2021 Census, Office for National Statistics (ONS), Contains public sector information licensed under the Open Government Licence v3.1.

Note: ONS advises caution if using numbers of single years of age, as these would not be expected to have the same level of accuracy as the aggregated estimates. ONS generally recommends rounding population estimates to the nearest 100.

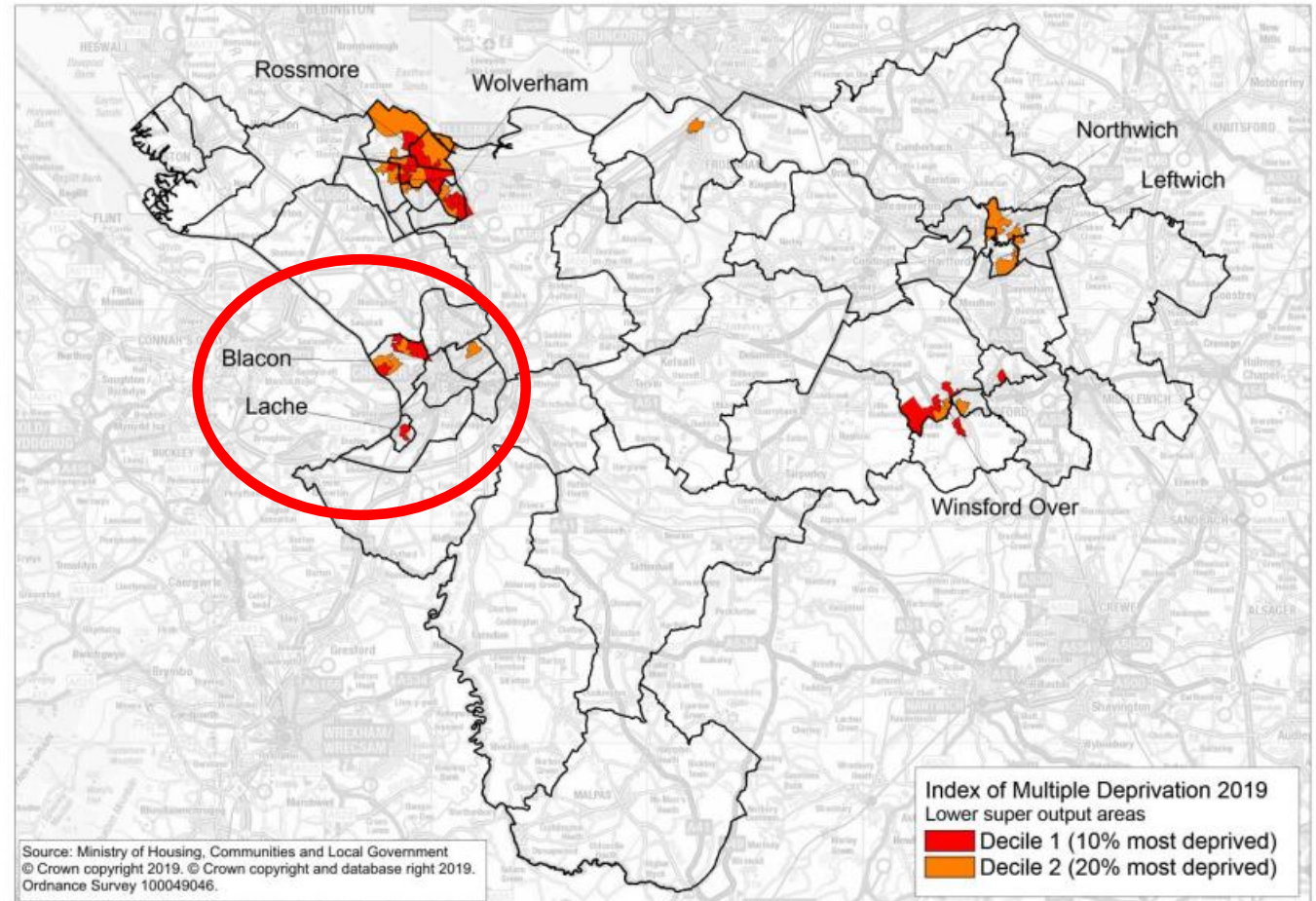
Definitions (2021 Census) : Dwelling = Accommodation occupied by or available for occupation by a household.

Household = One person living alone / group of people living at the same address (who share cooking facilities and a living room/ dining area).

Ethnic minority (in this report) = All ethnic groups other than White British.

Deprivation

- The highest levels of deprivation are found in the urban areas of Cheshire West and Chester, primarily within the City of Chester, and the towns of Ellesmere Port, Northwich and Winsford.





what's the number of people that would..

per 100

actuals

Filters [Clear all filters](#)

Select your area

- Cheshire & Merseyside
- Cheshire East
- Cheshire West
- Halton
- Knowsley
- Liverpool
- Sefton
- St Helens
- Warrington
- Wirral

Age band

All

PCN

Multiple selections

Neighbourhood

All

Practice Name

All

Gender

All

Have depression



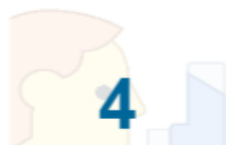
compared to C&M: +1

Have diabetes



compared to C&M: -1

Have asthma



compared to C&M: +0

Have COPD



compared to C&M: -1

Have a history of heart failure



compared to C&M: +0

Have cancer



compared to C&M: +1

Have dementia



compared to C&M: +0

Have heart disease



compared to C&M: -1

Have a history of epilepsy



compared to C&M: +0

Have hypertension



compared to C&M: -2

Be current smokers



compared to C&M: -1

Have a history of stroke



compared to C&M: +0

Have learning disabilities



compared to C&M: +0

Have palliative end of life care



compared to C&M: +0

Have Chronic Kidney Disease



compared to C&M: -2

Have a history of obesity (BMI 30+)



compared to C&M: -1

in a year they would have..

AE visits



compared to C&M: -21

Mental Health appts



compared to C&M: +0

Emergency admissions



compared to C&M: -3

First OP appts



compared to C&M: +2

Follow-up OP appts



compared to C&M: +34

Elective admissions



compared to C&M: +10

999 calls



compared to C&M: +0

111 calls



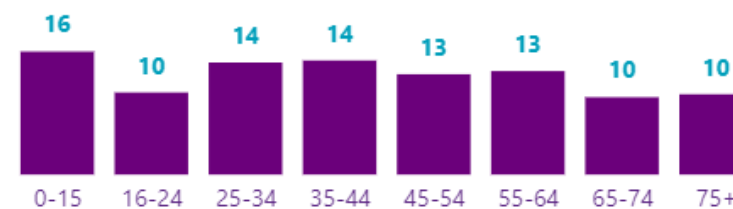
compared to C&M: +3

Length of stay (total days)



compared to C&M: +7

They would be aged..



Chester GP Practices

- Boughton Medical Centre
- City Walls Medical Centre
- Elms Medical Centre
- Fountains Health
- Garden Lane Medical Centre
- Handbridge Medical Centre
- Heath Lane Medical Centre
- Lache Health Centre
- Northgate Medical Centre
- Northgate Village Surgery
- Park Medical Centre
- St Werburghs Practice
- Upton Village Surgery
- Western Avenue Surgery

- There are 3 PCNS and 14 GP Practices in Chester. These are located across various sites.



Fountains Medical Centre

One Chester Community Partnership Steering Group

- One Chester Community Partnership Steering Group meet monthly.
- We have reviewed our membership to engage key partners and continue to do so.
- Key members:
 - Social Prescribers
 - PCN Managers
 - Clinical Directors
 - CWAC Commissioners
 - Representatives from local organisations such as Healthbox CIC, Here & Now, Neurotherapy Centre, CFC Community Trust
 - Ward Councillors
 - Chair, community lead and Community Partnership Administrator at each meeting
- We meet monthly to ensure motivation stays high and key actions are delivered.
- We invite speakers in regularly to share what's going on and to learn from others



What does the data say about our area?

Ward	Age	Attendance Allowance	Car availability - no car or van in household	Disabled	Divorced or civil partnership dissolved	General health - very bad or bad	IMD - living in top 20% deprived neighbourhoods in England	IMD - living in top 20% deprived (income - older people) neighbourhoods	Lives alone	Pension credit	Unpaid care (provides 20+ hours of unpaid care a week)	Widowed or surviving civil partnership partner
Chester City & the Garden Quarter	23.8%	12.3%	35.2%	32.9%	21.6%	12.0%	0.0%	16.6%	42.6%	15.9%	5.3%	15.9%
Newton & Hoole	32.7%	12.4%	22.4%	29.8%	15.9%	10.6%	8.8%	28.5%	30.4%	11.6%	6.4%	16.2%
Christleton & Huntington	32.3%	9.4%	8.3%	25.4%	10.7%	6.4%	0.0%	0.0%	20.6%	4.2%	6.2%	13.4%
Great Boughton	37.3%	12.9%	18.2%	31.1%	14.3%	10.2%	0.0%	0.0%	31.6%	7.8%	6.2%	19.3%
Upton	33.0%	10.3%	13.2%	30.1%	11.6%	7.9%	0.0%	0.0%	23.6%	7.7%	5.5%	17.3%
Blacon	30.4%	12.9%	28.4%	39.4%	18.3%	16.9%	58.2%	58.2%	29.4%	19.9%	8.5%	15.7%
Handbridge Park	40.4%	9.0%	13.6%	23.6%	10.9%	7.1%	0.0%	0.0%	26.4%	4.2%	5.6%	16.8%
Lache	26.6%	9.7%	25.7%	34.2%	22.1%	15.6%	24.6%	24.6%	30.3%	17.3%	7.5%	10.9%
Saughall & Mollington	43.9%	12.9%	10.0%	31.7%	10.5%	8.9%	0.0%	0.0%	21.1%	7.1%	7.3%	16.7%

<https://www.cheshirewestandchester.gov.uk/your-council/datasets-and-statistics/insight-and-intelligence/borough-and-ward-profiles/state-of-the-borough>

One Chester Community Partnership Priorities from Place

Falls

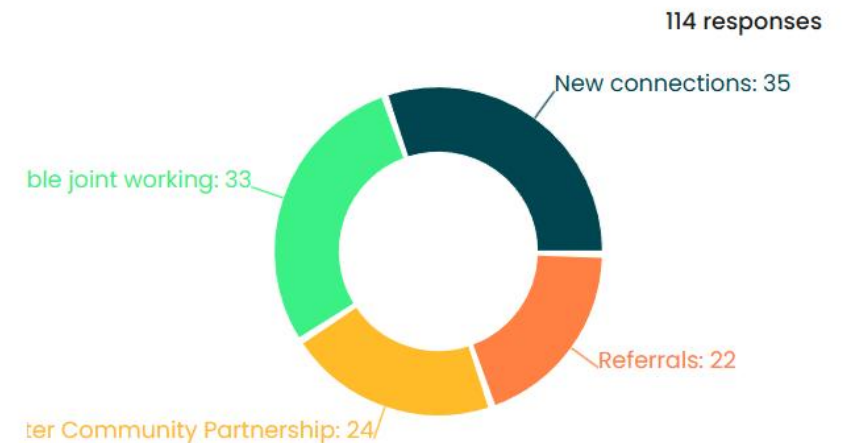
Lone
Pensioner
Households

Poverty,
Education &
Employment
(CYP &
Families)

Circulatory &
Respiratory
Disease

Network events

- One Chester CP held a network event in June and November of 2024
- Held at Chester Town Hall
- Attendees included representatives from the community care team, social prescribers as well as service providers and Council staff.
- 25 stallholders booked at each event with representation from organisations such as Healthbox, Here and Now, Bread Together etc
- Feedback in Plinth proved event was successful and peoples understanding of community Partnership has increased and new connections had been made.
- 6 months after the event two projects were successfully underway.



Brens Brews

Connection between The Bren Project and Hoole URC was made at One Chester Community Partnership's networking event in late 2024.

The Bren Project recently opened Bren Brews at Hoole United Reformed Church (URC), helping people with disabilities learn new skills that can support their journeys into volunteering or employment.

Bren Brews is now open at Hoole URC from 10am to 3pm on Monday to Friday, with coffee, tea, milkshakes and cakes all on the menu.

Find out more here : [Providing personal development opportunities for people with disabilities | Cheshire West Voluntary Action : Cheshire West Voluntary Action](#)



Walking Netball

After an introduction to England Netball at a One Chester networking event, the Community Partnership funded six weeks of walking netball sessions, equipment for Chester FC Community Trust and training for people to become walking netball hosts

Up to 16 people attended the initial six weeks of sessions held by England Netball, growing to 25 as sessions have continued and are now being led by Chester FC Community Trust. This has helped create a real team spirit, with a team of nine attending the EN Northwest Summer Walking Netball Festival and finishing second



One Chester Community Partnership developed 3 project areas:

1. Health & Wellbeing – Physical Activity

- Circuit exercise classes have been subsidised in Lache
- Live Well updated with Chester walking group information
- Cycle route leaflets printed in collaboration with Chester Cycle campaign
- Maximisation



2. Holiday Activities

- CWaC hosted a webpage for free summer/half term activities
- Promotion of activities
- Free Family Fun day



3. Social Isolation- Older people/adults

- Intergenerational Pen pal project
- Chatty Chester



Chatty Chester



- Goal is to create a Chatty Chester, a city that stands and collectively fights back against loneliness and isolation using the Chatty Café Scheme.
- Chatty Cafe is a network of Chatter & Natter tables where customers can sit if they are happy to talk to other customers
- First phase is to ask Community cafes to take part. Nine community cafes across Chester were initially asked to be involved. Great response with 8 already signed up. One Chester CP pays £30 for yearly membership.
- Second phase being undertaken is to ask independent business/cafes to take part

Crossroads Community Hub is one of many community cafés in the Chester area that have joined the Chatty Café scheme.

- “For the volunteers, it’s made it really easy to connect with people and start that conversation.
- “We’ve definitely seen an increase in people just coming to the café rather than the foodbank we run.
- Youtube video:
<https://youtu.be/x6qdbCoOCik?si=xhFW2wtHOp5DuAFv>



CVD Project Proposal

Using Enhanced Data One Chester CP created a project on CVD prevention

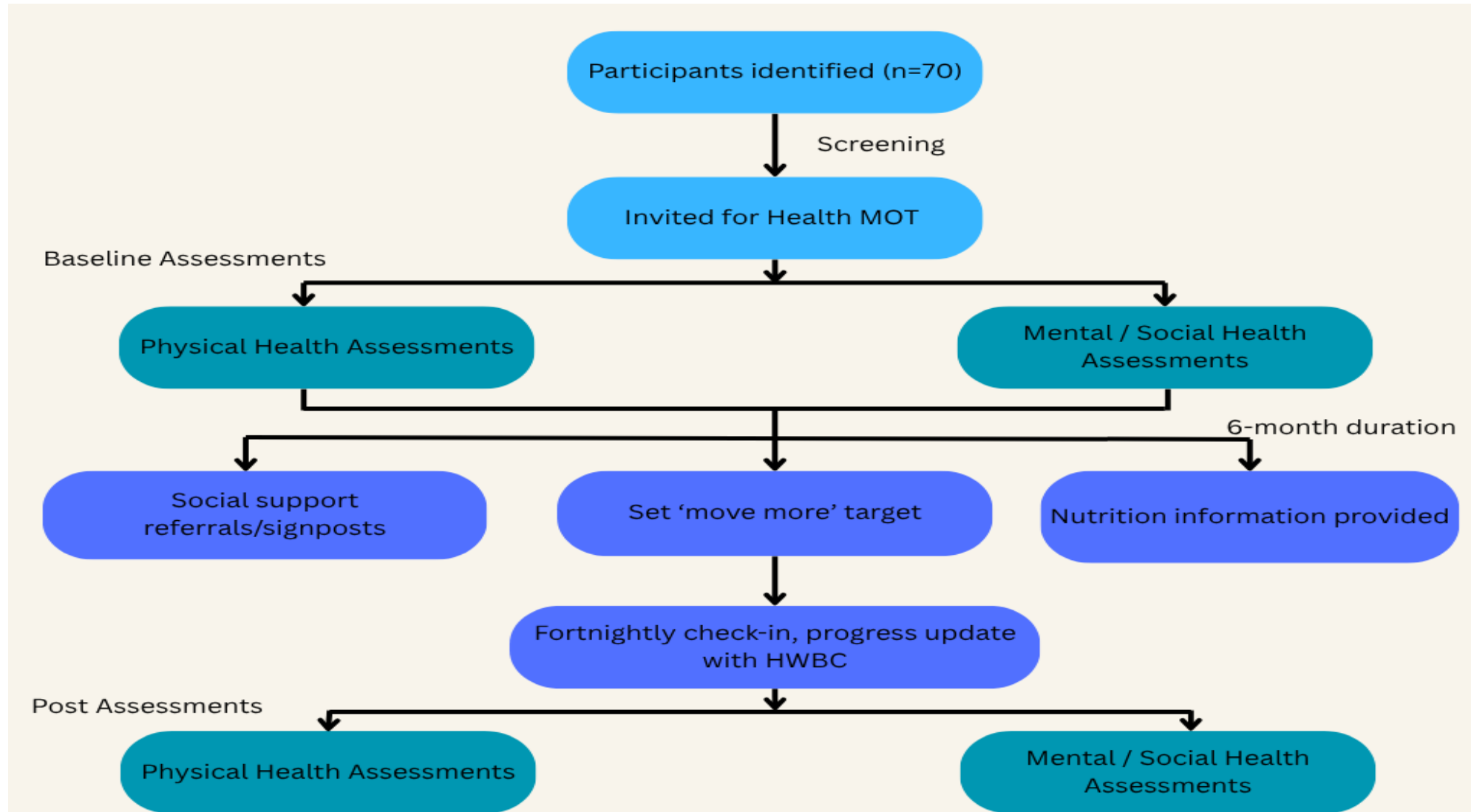
Health MOT' to act as a baseline assessment – support from Living Well Bus.

- Physical health (sit to stand additional) and MH assessed.
- Rating for 'readiness to change' taken
- Appointment made for first 1-2-1 – identify support required/wanted by individuals
- Signpost / refer to relevant organisations (Citizens Advice, social groups etc.)
- Set realistic activity targets, to be reviewed at regular meetings.
- Discuss nutrition goals – provide basic info regarding healthy eating and affordable cooking.
- Review fortnightly, discuss progress, barriers and successes.
- **Data collection:**
- Repeat all measures after 6-months
- Wellness questionnaire each month, PA questionnaire mid-point.

CVD Project Proposal

- **Exercise / Movement**
- Encouraged to do more activity, tailored to interests
- Shorter sessions, 5 mins a day can build a habit
- Library of resources including videos
-
- **Nutrition advice**
- Healthy eating advice
- Library of resources
-
- **Social Support**
- Signposting and relevant information shared

CVD Project Overview



Free Summer

The free summer campaign is to promote free activities during the School Holiday periods (helping to support the impact of child poverty)

Advertise free summer holiday activities across Chester through GP's

Free Family community Day held in August with over 1000 attendees through the day, 34 community organisations attending

Then progressing into Free activities during half term periods and helping to advertise free and low-cost activities linked with CWaC's webpage



Our Partners



Chester has Two Let's Talk sites

Let's Talk (Blacon)

- Location
- Matthew Henry Evangelical Church, Nevin Road, Blacon, Chester CH1 5RS
- Opening times
- Every 2nd and 4th Friday of the month – 10am to 12 noon
- Available support
- Access to community activities
- Advice on managing activities relating to daily living
- Advice about equipment, aids and adaptations
- Cost of living advice and support
- Advice on how to access support and activities to reduce social isolation and loneliness
- Carer support
- Consumer advice



Chester has Two Let's Talk sites

Let's Talk (Lache)

Location

- The Venue, Hawthorn Road, Lache, Chester CH4 8HX

Opening times

- Every 1st, 3rd and 5th Friday of the month – 11am to 1pm

Available support:

- Access to community activities
- Advice on managing activities relating to daily living
- Advice about equipment, aids and adaptations
- Cost of living advice and support
- Advice on how to access support and activities to reduce social isolation and loneliness
- Carer support
- Consumer advice





Tomorrow's
Women

Let's Talk At Tomorrows Women – Chester

Tomorrows Women offer support for women aged 18+ with a range of issues including mental health, substance misuse, confidence & self-esteem, money, exercise, and social isolation.

Let's Talk holds sessions here monthly which hosts a social worker.



**Helping Local people to live healthier happier lives,
supported by the community**

Priorities 2024/2025

- CVD
- Older persons and Hospital Discharge
- Mental Health
- One Chester CP to support the health and wellbeing strand of the, “One City Plan”
[One City Plan](#)

Projects:

1. Health & Wellbeing – Physical Activity
2. Holiday Activities
3. Social Isolation- Older people/adult

Outcomes / Measures

1. Use of platforms and methods to share information
2. Chatty café data and Plinth
3. Community feedback



ONE CHESTER